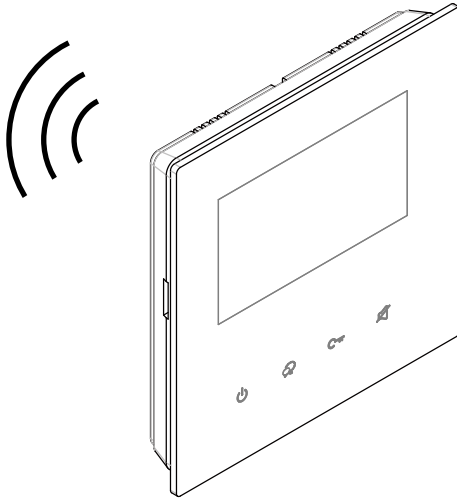


2 WIRE SYSTEM

DX439-TD4

4.3" WI-FI MONITOR WITH TOUCH SCREEN

USER MANUAL



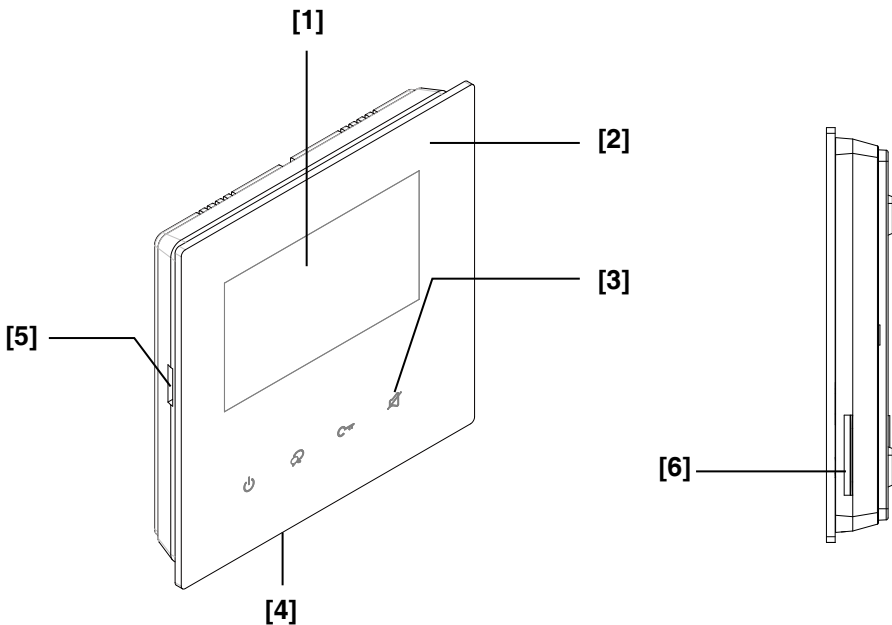
- Please read this manual carefully before using the product you purchase, and keep it well for future use.
- Please note that images and sketch maps in this manual may be different from the actual product.

CONTENTS

PARTS AND FUNCTIONS	3
Front panel	3
Mounting	4
Screen	5
BASIC OPERATIONS	6
Answering a call	6
Monitoring	9
Recording	10
Calling other monitors(Intercom)	11
Viewing calling records	12
Opening staircase light	13
No disturb function	13
Transferring call	14
SETUP INSTRUCTIONS	15
Ring tone setting	16
General setting	16
Date and time setting	17
Changing the display language	17
Setting monitor time	18
SD card	18
Restoring to default setting	19
About	19
Installer setting	20
DIP Switcher Set Address	20
Enabling/Disabling intercom function	21
Software upgrade	21
System setting	21
Wi-Fi setting	22
Wi-Fi sub monitor regist	24
Sip config	25
SIP tools	26
Download Setup 2Easy APP	28
Surveillance door station via 2Easy APP	30
Specification	31

PARTS AND FUNCTIONS

Front panel

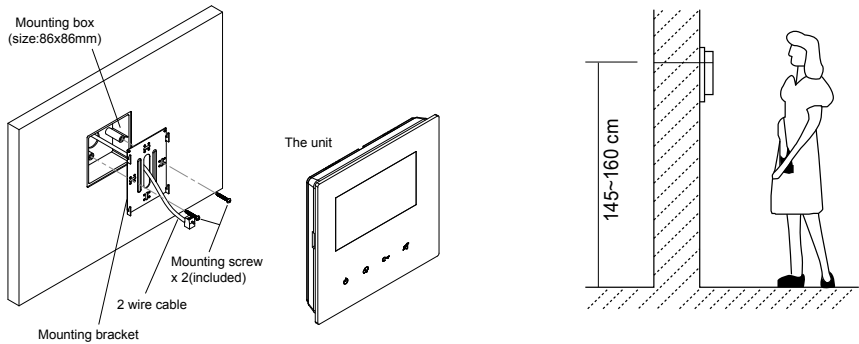


Function keys and status LEDs

NO.	Item	Description
[1]	Digital LCD touch screen	<ul style="list-style-type: none"> • See the next page for details • Display the visitors' image
[2]	Front panel	Glass panel
[3]	Close button/LED	<ul style="list-style-type: none"> • Press to shut off the screen • Blink times when plug in power • Light up when power connected
	Talk/Mon button/LED	<ul style="list-style-type: none"> • Press to communicate hands free with visitor • Press to view the outdoor condition in standby mode • Blink when receive a call • Light up while talking with visitors
	Unlock button/LED	<ul style="list-style-type: none"> • Press to release the door • Light up when there is missed call
	No disturb button/LED	<ul style="list-style-type: none"> • Press to enter the call scene page in short cut • Light up when activate the no disturb function
[4]	Microphone	Transmit audio from one station to other stations
[5]	SD card slot	Use to insert micro-SD card
[6]	Speaker	Send out sounds of ring tones, audios and alarms

PARTS AND FUNCTIONS

Mounting



The installation height is suggested to 145~160cm.

1. Use screws to fasten the mounting bracket to the wall with mounting box.
2. Connect the 2 wire cables to the unit.
3. Mount the unit to the mounting bracket, make sure the unit is absolutely attached to the mounting bracket.

Terminal description

L1,L2: Bus line terminal.

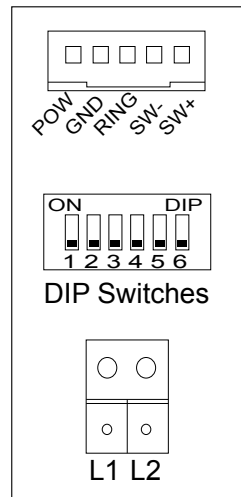
POW,GND: 12~18V extra power connection port.

Ring,GND: Extra buzzer connection port.

SW+,SW-: Extra door bell call button connection port.

DIP switches: Total 6 bits can be configured.

- **Bit1~Bit5:** User Code setting switch.
- **Bit6:** Video impedance matching switch.



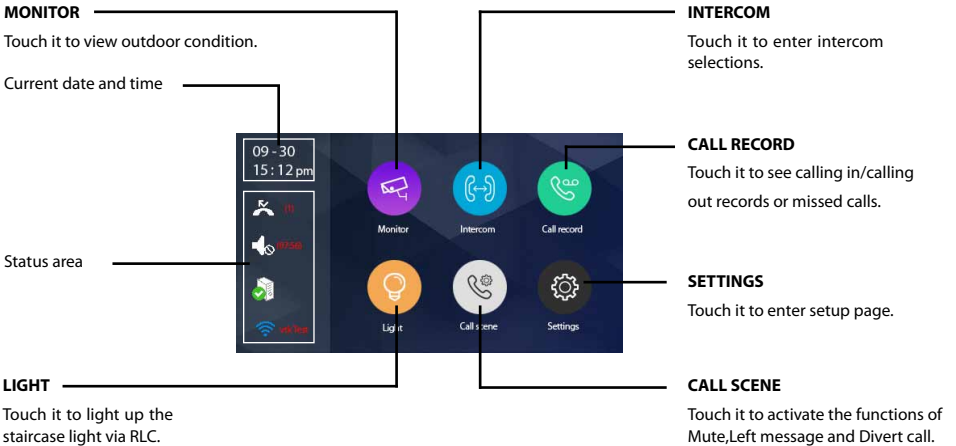
PARTS AND FUNCTIONS

Screen

Main Menu

The Main menu is your starting point for using all the applications on your monitor.

Touch anywhere of the screen on monitor in standby mode, the Main menu will appear as follow:

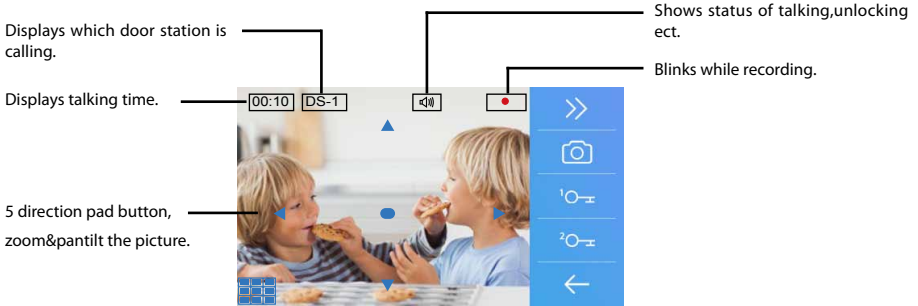


Function status

Icon	Meaning	Description
	Missed call	<ul style="list-style-type: none"> • Display when there is missed call unread. • Touch it to review the missed call in shortcut.
	No disturb	<ul style="list-style-type: none"> • Display when activate the function • Touch it to enter Call Scene page in shortcut.
	Call transfer	
	SIP server connection active and configured	Touch it to enter SIP server information page in shortcut.
	SIP server connection disabled	
	SIP server connection active and not connected	
	Wi-Fi connection active and not connected	Touch it to enter Wi-Fi setting page in shortcut.
	Wi-Fi connection disabled	
	Wi-Fi connection active and configured	

BASIC OPERATIONS

While talking with a door station



- Note:** 1. The 5 direction pad operation should make effective with **fish-eye** door station.
2. The following instructions are based on fish-eye door station.

Answering a call

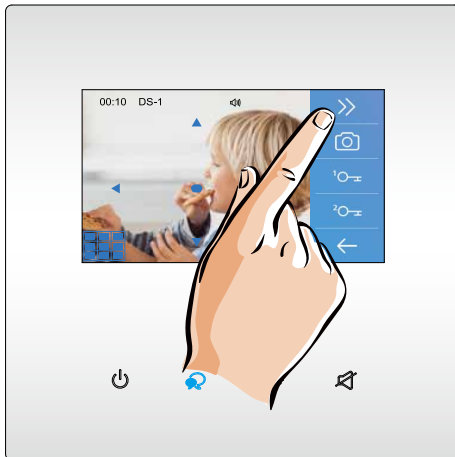


1. Touch **TALK/MON** button to answer the call, the LED lights up. To end the call touch **TALK/MON** button again.

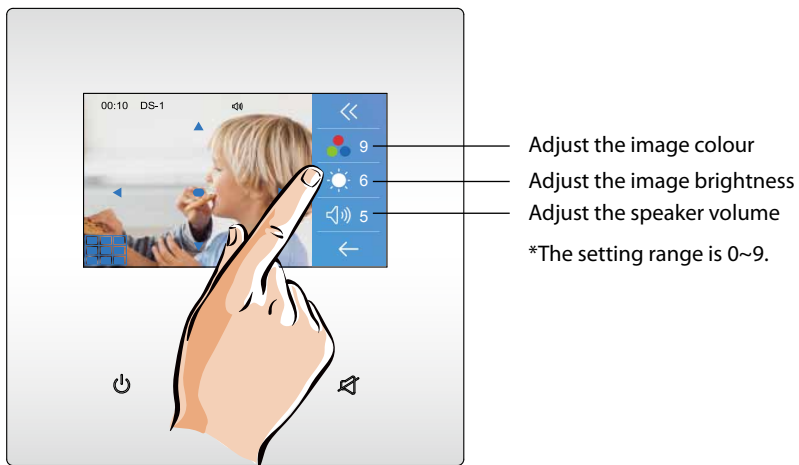
BASIC OPERATIONS



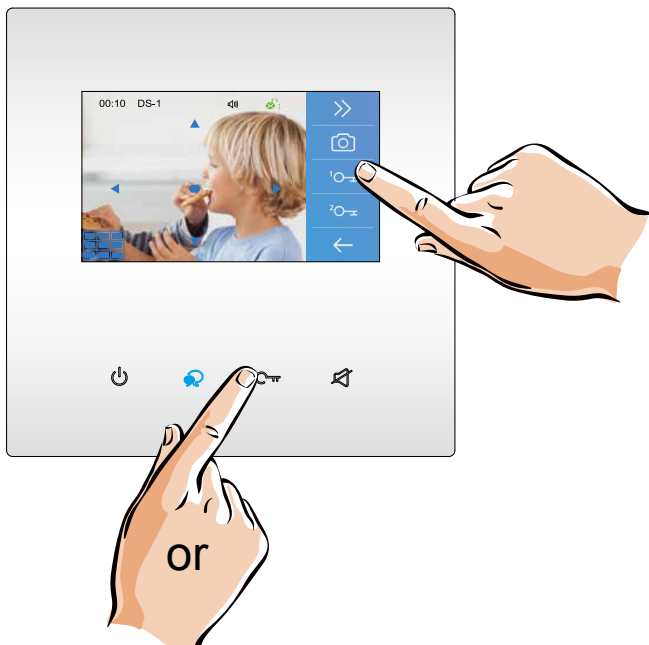
2. If wants to see greater detail about visitors,move to the desired position by touching ▲ ▼ ● ◀ ▶ on the screen to view the image in pantilt & zoom mode.




BASIC OPERATIONS



3. If necessary, during the call touch >> key to display the adjustment icons. Touch the corresponding icons to adjust the parameters.



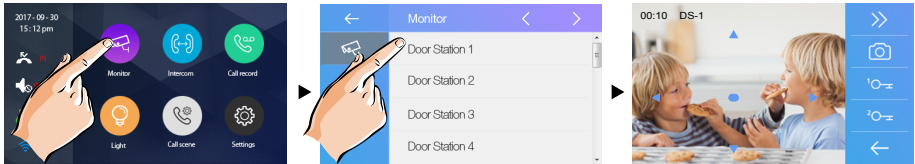
4. Touch Unlock key or Unlock icon on screen to open the Entrance Panel door lock.

The icon  will be displayed on screen, to indicate that the door lock has been released.

BASIC OPERATIONS

Monitoring

It's possible to see the condition of entrance at any time.



1.Touch to display the door stations/cameras in your system.

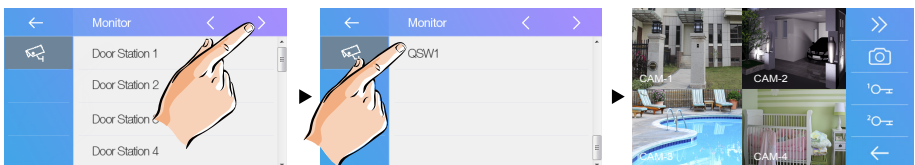
2.Touch to activate the desired door stations/cameras.

3.The image is displayed for 30s.

*Touch **TALK/MON** button on panel in standby mode to monitor the master door station in shortcut.

Video Quad Monitoring:

If the system installs multi cameras via QSW. **Video quad monitoring** is available.



1.Base on the last section,touch ">" icon twice to enter the third page.

2.Touch QSW1 item to activate the monitoring.

3.The four images are displayed at the same time.

Touch one of video to switch to monitor the corresponding camera Independently.

To end monitoring

Touch "<" icon on the screen, or press **TALK/MON** button on the panel,or press **CLOSE** button on the panel.

* Monitoring also ends automatically after 30 seconds.

Note: During monitoring, images can be viewed, but audio cannot be heard.

During monitoring, manual recording is available.

During monitoring, touch **TALK/MON** button on panel to begin communication with outdoor person.

BASIC OPERATIONS

Recording

Videos and images are possible to be recorded, both automatic recording and manual recording are available.

Automatic recording

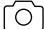
- Recording starts after 3 seconds while receiving a call.
- While recording, “ ● ” blinks on the screen.
- Capture one video/image automatically for each calling.




Note:

- * Automatic recording function cannot be cancelled.
- * Automatic recording is not available while monitoring a door station. To save videos/images while monitoring, see manual recording below.

Manual recording

While being called, Touch  icon when an image is displayed.

Note:

- * Manual recording is available at any time when  icon is on the screen.
- * Manual recording is allowed in pantilt & zoom mode.
- * Manual recording cannot be performed during automatic recording.

* If a micro SD card is installed, the recording is video, and recording time limited is 10s. The videos will be saved in micro SD card directly. Otherwise, the recording is image. The image is stored in the built-in memory first.

* A brand new SD card needs to be formatted by the monitor, then it can be used for video recording.

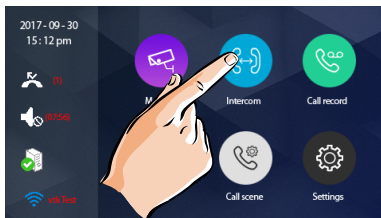
* If a micro-SD card is installed, images can be copied to SD card.

* Max. 32G Micro SD card is supported.

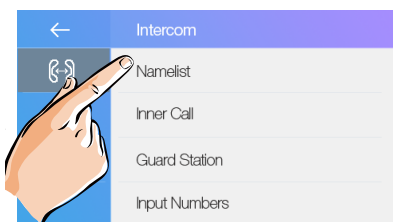
BASIC OPERATIONS

Calling other monitors(Intercom)

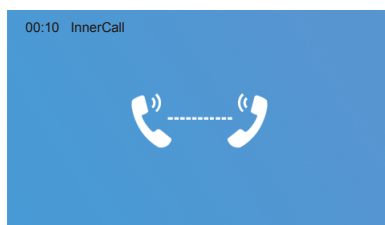
It is available to communicate with another monitor installed in another room of the apartment or with a monitor of another apartment or with a Guard Station.



1.Touch to display the available intercoms.



2.Touch to activate the communication with the desired intercom.



The LED **TALK/MON** lights up to indicate that the call is active.

When the recipient answers the call, communication is started.

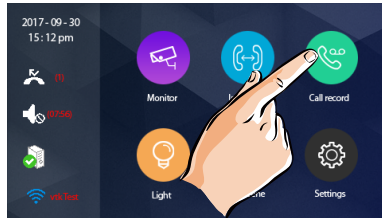
3.Touch **TALK/MON** button to end the intercom call.

Note: when a call is received from the outdoor station while the indoor monitor is in “intercom” mode, the system follows the priority rules and ends the intercom call.

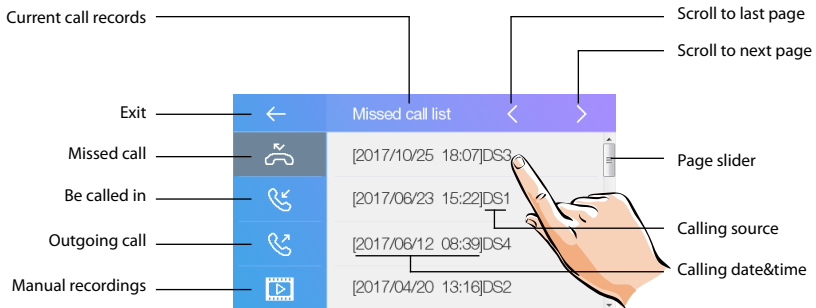
BASIC OPERATIONS

Viewing calling records

All calls from door station or other monitors will be recorded and can be reviewed afterwards.

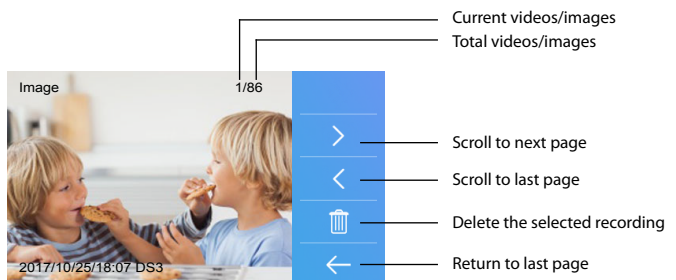


1.Touch to display the available calling records.



2.Touch to see greater details.

* When the capacity is full,the oldest calling records will be deleted automatically to make room for new records.



BASIC OPERATIONS

Opening staircase light

Note: The staircase light should be connected on the system, and this function should be supported by RLC. Please refer to RLC user instruction in detail.

Touch **[Light]** icon on main menu page, the staircase light will be turned off automatically after 60 seconds.



*Touch **[Light]** icon again to turn off the light.

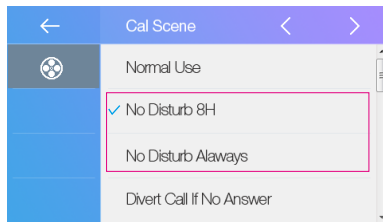
No disturb function

It is available to forbid the calling from outdoor station or other monitors.



1.Touch to display the call scenes.

BASIC OPERATIONS



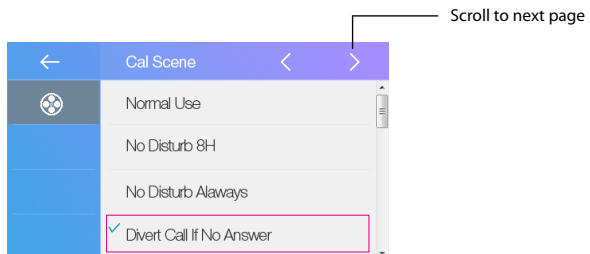
No Disturb 8H: The calling from door station or other monitors will be forbidden for 8 hours.

No Disturb Always: The calling from door station or other monitors will be forbidden all the time until the function is released.

* This function will perform immediately if selected, and the status area on main menu page will show "🔇" icon. The LED 🔴 will light up in red.

Transferring call

The calling from door station can be diverted to your smart phone.



1. Divert Call If No Answer: If nobody answers the call in 30s when receives call from door station, diverts the call to the mobile.

At this mode, the monitor will always open the screen and show image from door station during diverted, if the monitor answers the call at this time, diverted will conclude at once.

2. Divert Call Always: When receives call from door station, diverts the call to mobile directly.

At this mode, the monitor will shut off the screen after diverting successfully, but you can still use it in normal.

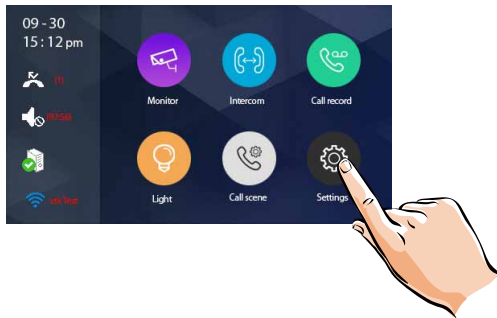
* If divert the call to mobile via Sip sever, need to choose one.

* The status area on main menu page will show "📞" icon.

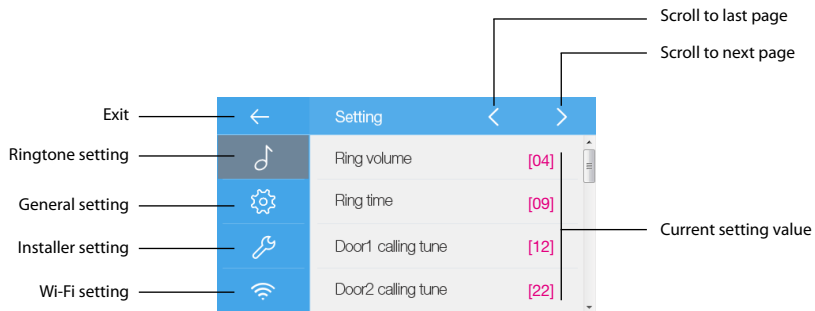
SETUP INSTRUCTIONS

The Main menu contains the “Settings” icon.

Touching it to get more setting items.



1.Touch to enter the settings section.



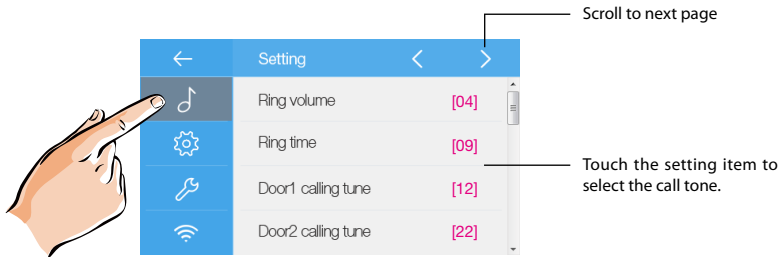
2.Touch the icon for the desired setting item:

- 🎵
 Ring volume-Door1/2/3/4 calling tune-DoorBell calling tune-Intercom calling tune -InnerCall calling tune-GuardCall calling tune
- ⚙️
 Date and time-Language-Monitor time-SD card-Restore to default-About
- 🔧
 Current address-Intercom enable-Fw upgrade-System settings
- 📶
 Wifi switch-Wlan setting-Wireless device Regist-IP/Smart phone regist-Sip config

SETUP INSTRUCTIONS

Ring tone setting

The ring call tone can be set individually to distinguish different calling sources. Total 22 tones can be selected.



Ring volume: adjust the ringtone volume.

Ring time: adjust the ringtone time.

Door1/2/3/4 calling tune: call tone from door1/2/3/4 entrance panel.

DoorBell calling tune: call tone from doorbell.

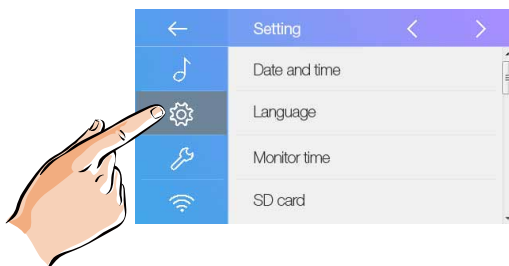
Intercom calling tune: call tone from an intercom of another apartment.

InnerCall calling tune: call tone from an intercom in your apartment.

GuardCall calling tune: call tone from the Gurad unit.

General setting

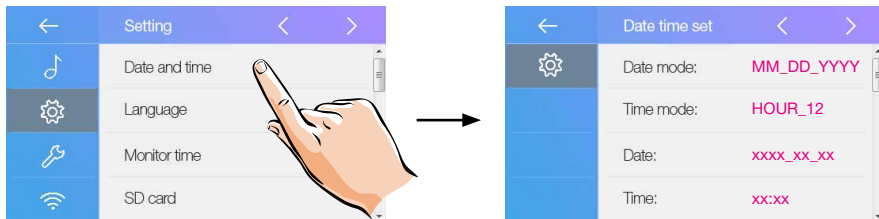
This section contains the general settings and device information.



SETUP INSTRUCTIONS

Date and time setting

The current date and time can be modified at any time.



Date mode: 2 display mode: month/date/year and date/month/year

Time mode: 2 display mode: HOUR_12 and HOUR_24.

Date: touch it to set the date .

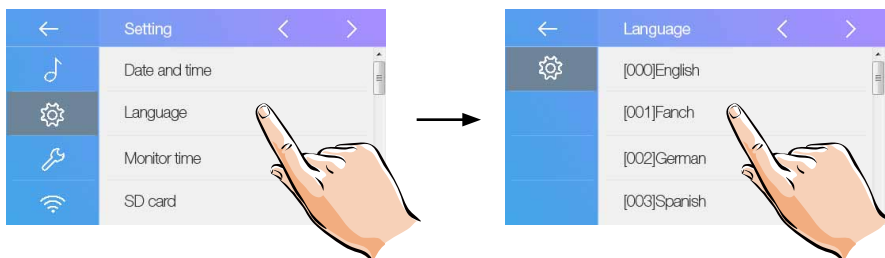
Time: touch it to set the time.

Time zone: touch it to set the time zone in your country.

Time auto update: **Disable:** should set the time manually. **Enable:** can synchronize the system time

Changing the display language

The default language can be customized. But you can change it to your desire language at any time.



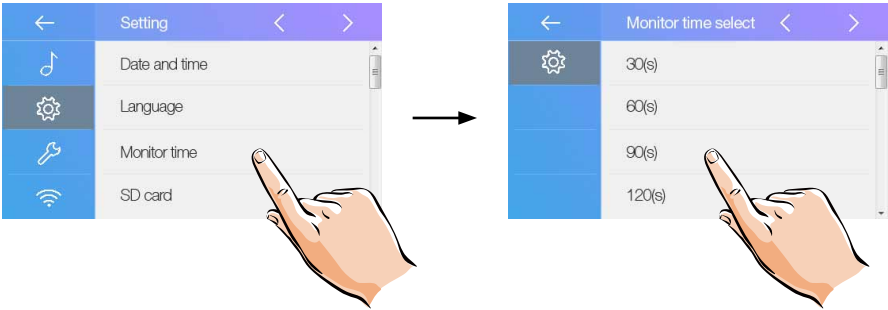
*If the target language is not found in the window, touch > icon to scroll next page.

SETUP INSTRUCTIONS

Setting monitor time

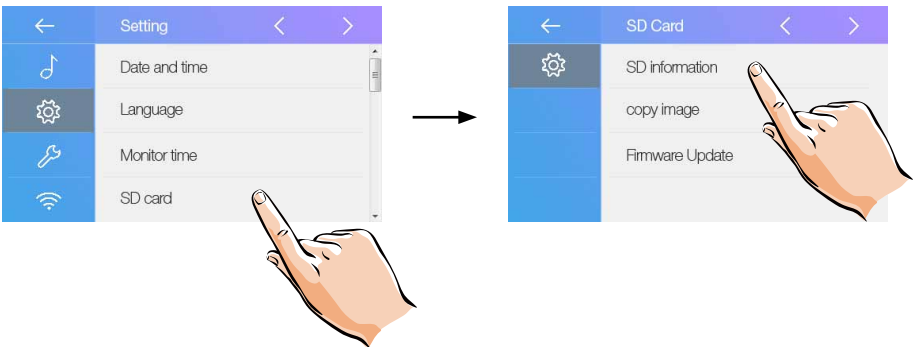
The monitor time can be changed at any time. It's available to set 30s, 60s, 90s, 120s, 150s, 180s, 210s, 240s, 270s, 300s.

* 30s is the default monitor time.



SD card

If the device insert an SD card, the SD card info can be reviewed on the device.



SD information:SD card memory info.

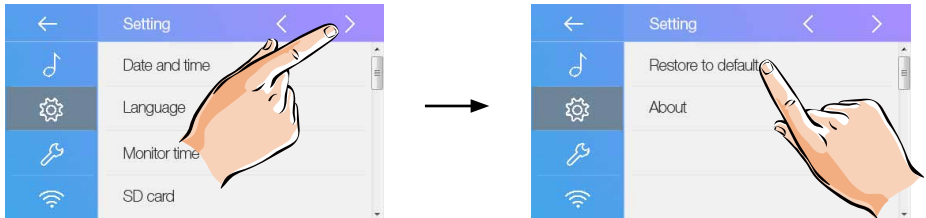
Copy image: touch it to copy the recorded images to SD Card.

Firmware Update: update the device firmware.

SETUP INSTRUCTIONS

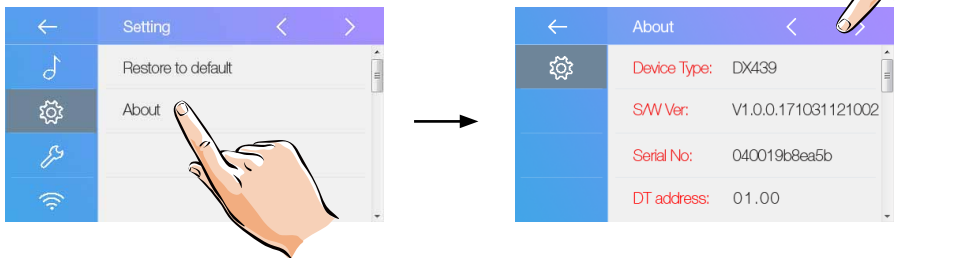
Restoring to default setting

The restore to default function allows the user to recover the settings to factory setting.



About

The device information will be listed.



Device Type: the device name.

S/W Ver: the software version.

Serial No: the device serial number.

DT Address: the device code number.

IP Address: the device IP address.

H/W Address: the device Mac address.

Subnet Mask: the device subnet mask.

Default Route: the device default route.

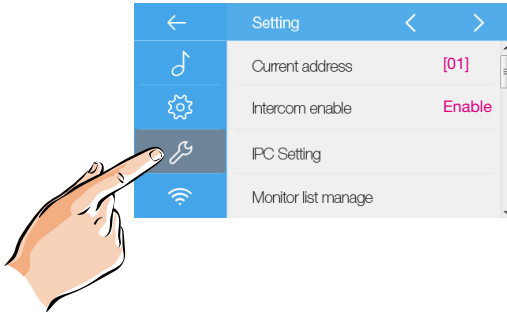
M/S Code: the device is a master monitor or sub monitor.

Online: the numbers of sub monitor.

SETUP INSTRUCTIONS

Installer setting

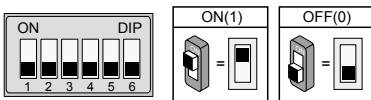
This section contains the device address setting and system settings.



DIP Switcher Set Address

The DIP switches are used to set the user code for each monitor. Total 6 bits can be configured.

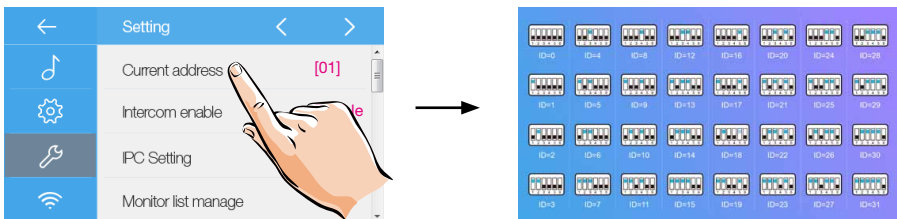
- Bit-1 to Bit-5 are used for user code setting. The value range is from 0 to 31, which have 32 different codes for 32 apartments.
- When multi monitors need to be installed in one apartment, these monitors should use the same user code, and the master/slave mode should be set on the monitor. (Details refer to the section of **Setting Slave Monitor**)
- Bit-6 is bus line terminal switch, which should be set to "ON" if the monitor is at the end of bus line, otherwise be set to "OFF".



Bit-6 switch setting

Bit state	Setting	Bit state	Setting
	When monitor is not at the end of bus line.		When monitor is at the end of bus line.

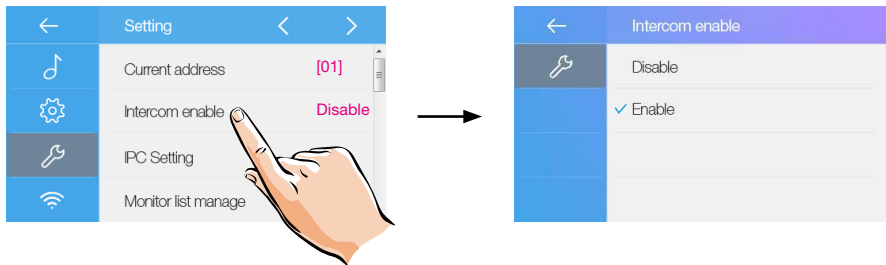
This monitor is assigned with DIP setting instructions. Total 32 DIP codes.



SETUP INSTRUCTIONS

Enabling/Disabling intercom function

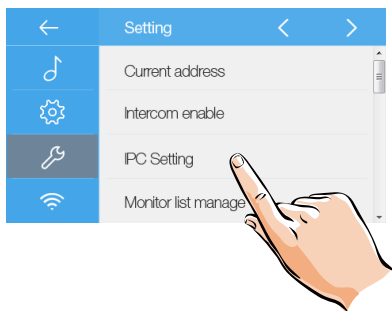
It's available to forbid or activate the intercom function.



*In default setting, intercom function is disable for the monitor.

Software upgrade

It's available to upgrade the device software via SD card.



Touch to activate the upgrade, it will upgrade automatically.

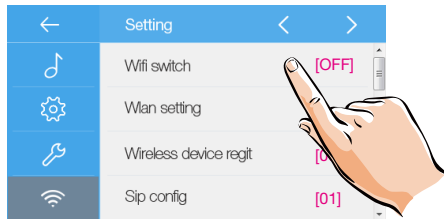
System setting

This section will be reserve.

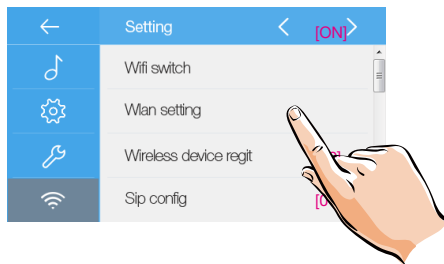
SETUP INSTRUCTIONS

Wi-Fi setting

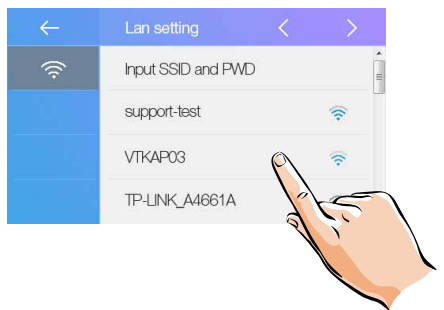
It is possible to connect the device to your Wi-Fi network.



1. Touch to activate Wi-Fi.

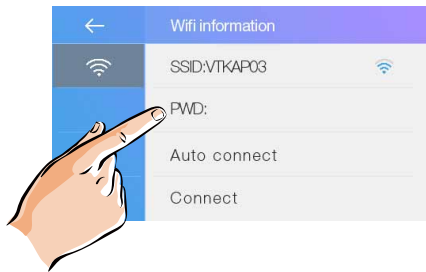


2. Touch Wlan setting item to enter Lan setting page.



3. Select the domestic network to which you want to connect the device.

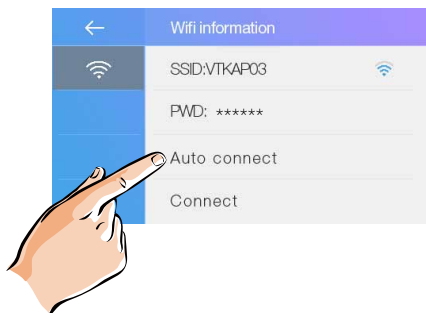
SETUP INSTRUCTIONS



5. Enter the password (if required).



6. Enter the password (if required). After finish, press "OK" to save and return to last page.

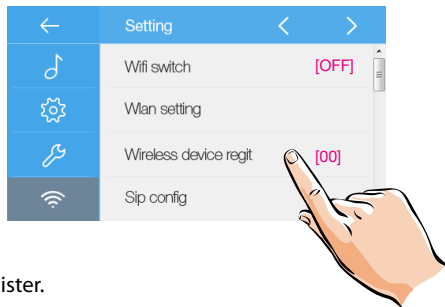


7. Touch Auto connect/Connect item to activate the network connection.

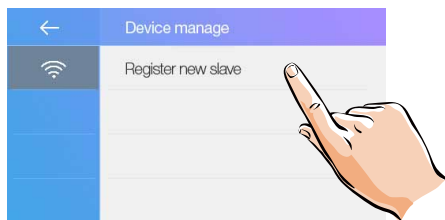
SETUP INSTRUCTIONS

Wi-Fi sub monitor regist

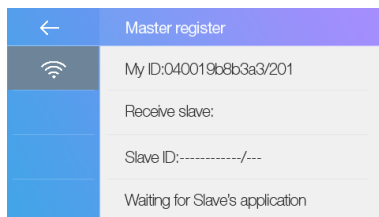
It is possible to add slave devices to your home.



1. Touch to activate the register.

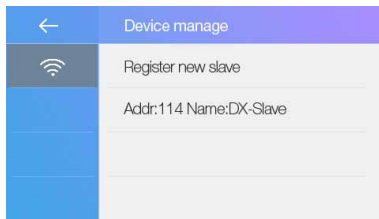


2. Touch to manage the device.



3. The device can get the Slave ID from Wi-Fi sub monitor automatically in home Wi-Fi.

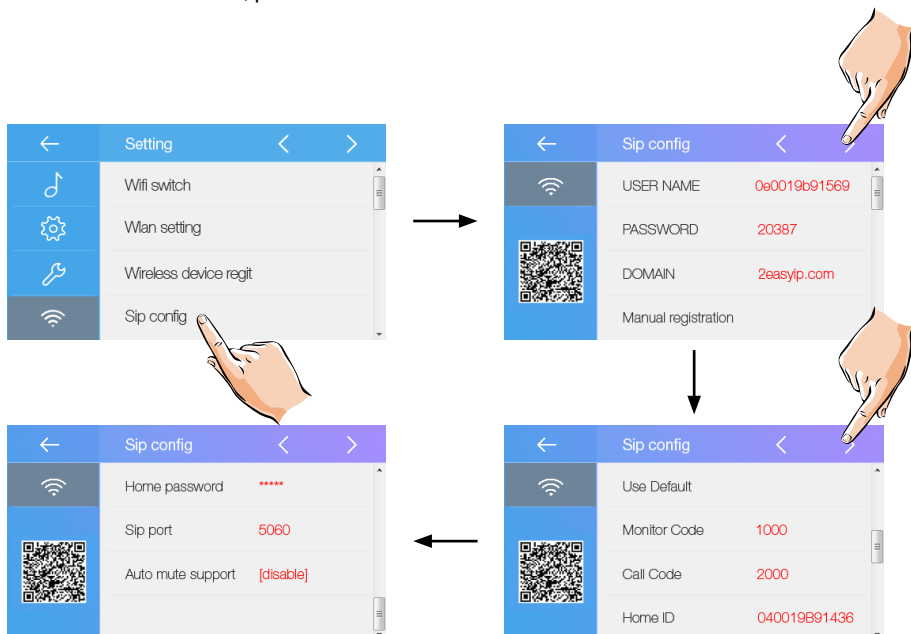
SETUP INSTRUCTIONS



4.If register is success, the Wi-Fi sub monitor will be added to master device .

SIP config

It's available to divert the call to mobile while out of home via SIP server. Note that the divert mode should be selected, please refer to P14.



SETUP INSTRUCTIONS

USER NAME: the user name of SIP sever.

PASSWORD: the user password of SIP sever.

DOMAIN: the SIP server's domain.

Manual register: clear the account, and then manual register.

Use Default: restore to default SIP account and password(touch to activate).

Monitor Code: code require to input to check door camera(for 3rd part APP).

Call Code: code require to input to call monitors.

Home ID: the home ID.

Home password: the home password(touch to edit).

SIP port: the protocol port(touch to edit).

Auto mute support: open/close auto mute support.

Notes:

1. Touch "Use Default" to restore all settings on "SIP config" and create 2 SIP accounts, one for DX monitor and one for 2Easy APP. Server will apply to restore two accounts' password to default, and register it. Only when:

- If your DX monitor is not brand new, we suggest you touch "Use default" before testing.
- 2Easy APP is not able to register on server

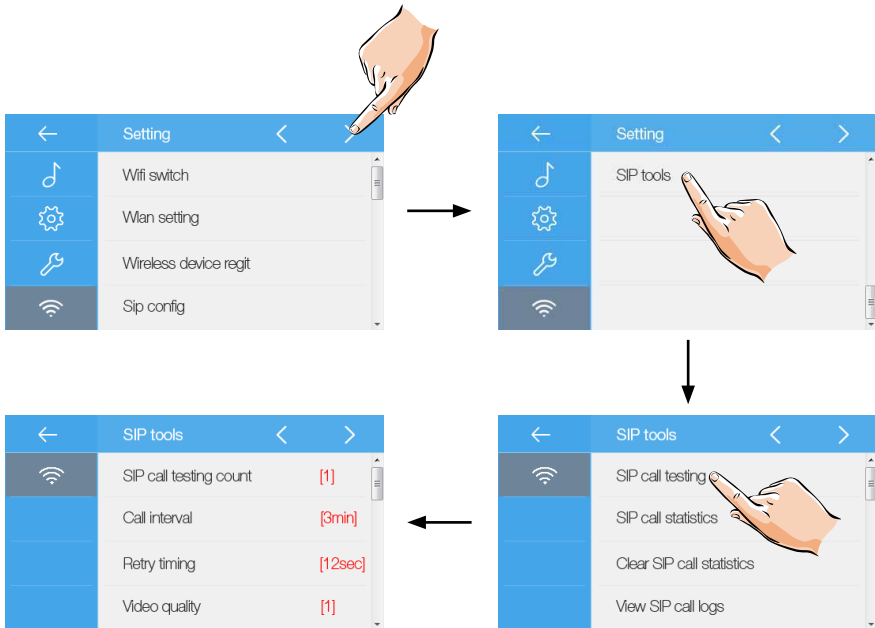
2. Touch "Manual register", DX monitor will apply to clean all SIP "contact" on server, and also will try to register itself to server, with this function it will helps when:

- 2Easy APP is not able to get push notification.
- DX monitor has connect with Wi-Fi, but "Server" icon with "!" or "x" beside.

SIP tools

SIP tools could test divert function and with an unattended door station.

SETUP INSTRUCTIONS



While if your test with pressing door station doesn't work well, you could also try with auto-test. Touch "SIP call testing" to enter call testing page.

- ○ "SIP call testing count" from 1 to 99, means test automatically 1-99 times;
- ○ Set "Call interval" from 1 to 10 min, means system will wait 1-10 min between 2 calling;
- ○ Keep "Retry timing" as default, 12sec
- ○ Set "Video quality" to 0, means lowest required to network;

After all settings have done, touch "Start SIP call testing", DX monitor will immediately divert a calling to mobile.

SETUP INSTRUCTIONS

Download Setup 2Easy APP

1. Scan and download 2Easy APP, or search "2Easy" on APP store.

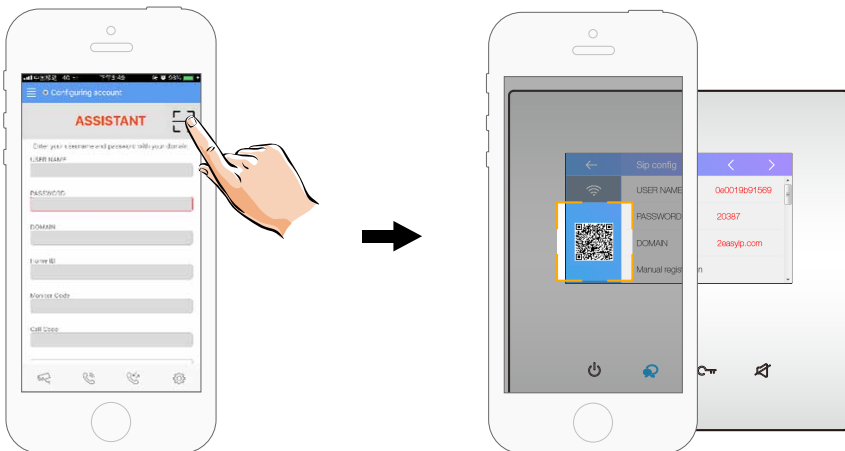
IOS



Android



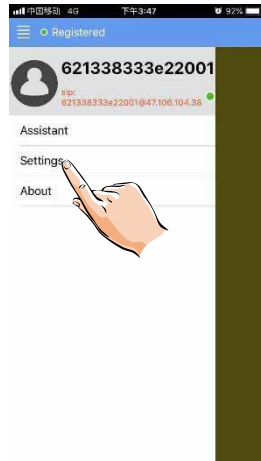
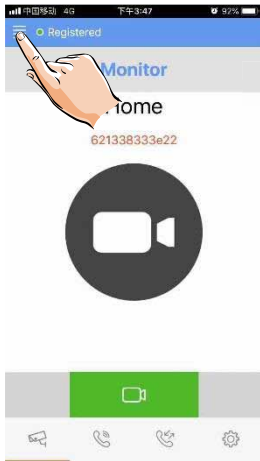
2. Permit "2Easy" with internet access and camera, on DX monitor, press "SIP Server" icon on main menu, and keep in "SIP config", on 2Easy APP, press on top-right, to scan QR code on DX monitor, and press "Save".



SETUP INSTRUCTIONS

3. Disable "IPV6" on 2Easy APP

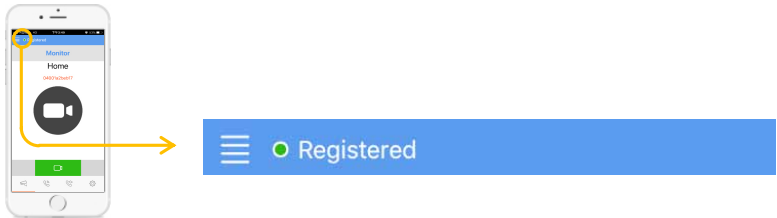
Most of internet provide doesn't support IPV6 feature, please manually disable it with follow steps:



Press here
to disable

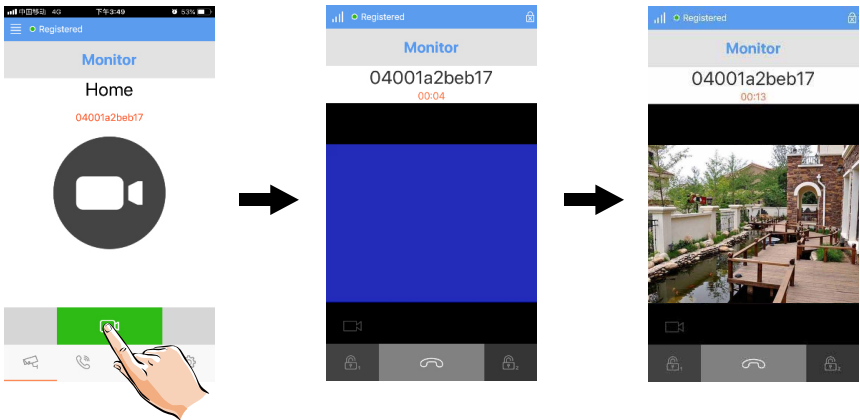
SETUP INSTRUCTIONS

4. After login SIP account on 2Easy APP, check on status bar, or press on the “Registered” area to manually register, until 2Easy APP display:



Surveillance door station via 2Easy APP

On 2Easy APP, press on “Monitor” and wait for a few second (Due to 2-Wire communication will take around 12 second to get video), blue screen is normally due to the DX monitor is verifying the password and monitor code.



APPENDIX

Specification

Power supply:	DC 20~28V
Power consumption:	Standby 1.8W; Working 5.4W
Communication:	Hands-free
Screen:	4.3 Inch digital color TFT
Display Resolutions:	480 x 272 pixels
Mounting:	Surface wall-mount
Material:	Glass panel
Color:	White
Wiring:	2 wires, non-polarity
Dimension:	145(H)×145(W)×23(D)mm

